

## INSTALLATION INSTRUCTIONS

**IMPORTANT, RETAIN FOR FUTURE REFERENCE: READ CAREFULLY***Tile can be installed on drywall, or cement board.***TOOLS AND MATERIALS REQUIRED (NOT INCLUDED)****CAN BE FOUND AT YOUR LOCAL HARDWARE STORE**

- White modified thin-set for mosaic wall tiles (using other colours of thin-set may alter the appearance of your tile)
- Rubber float
- Non-sanded tile grout
- V-notched trowel (5 mm, 3/16 in)
- Wet saw with a diamond blade
- Utility knife
- Tape measure
- Sponge
- Spacers
- Level
- Margin trowel or stir stick
- Safety glasses
- Pencil
- Stone sealer

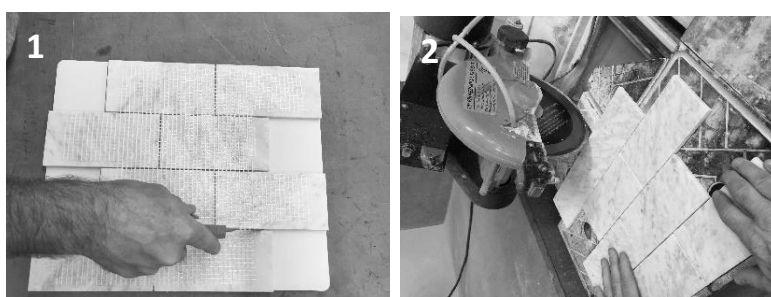
**IMPORTANT INFORMATION**

- Do not install as flooring or on the ceiling; this is for wall installation only.
- Do not install this item outdoors.
- When installing tiles, mix and match from different cartons for a natural look.
- Make sure the surface is levelled and clean prior to installation.
- If applying mosaic tile on gypsum, it is important to apply a coat of primer prior to beginning your mosaic wall tile installation.
- Inspect each tile prior to installation.
- If you are installing mosaic wall tiles in a shower, it is necessary to install a waterproof membrane.
- Install any trim or profile strips before installing the mosaic wall tile.
- Modified thin-sets are generally appropriate for mosaic wall tile installations. Organic mastics (premixed thin-sets) are not appropriate for bathroom installations, and should not be used for mosaics featuring glass wall tiles.
- Follow the manufacturer's instructions when applying the modified thinset and grout.
- Once the tile has been grouted, there may be some temporary discolouration due to water absorption. Please allow 24-48 hours for the tiles to dry and return to their usual colour.
- Marble is a natural stone, colour variances may be observed between different chips.

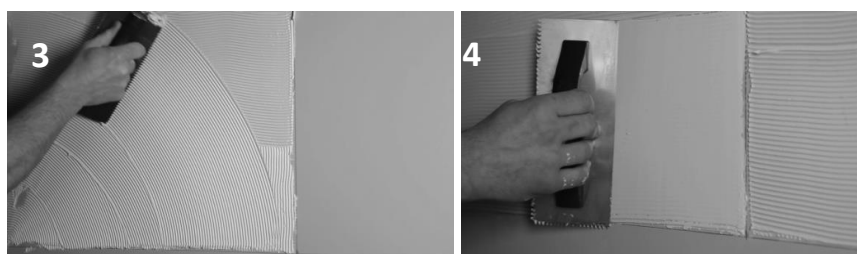
**INSTALLATION**

1. Plan the placement of the tiles on your wall before beginning the installation. The first tile should be placed at the centre or near the centre of the wall, keeping in mind that the last tiles in each row should ideally be wider than half a tile. Make sure that the tiles are level.

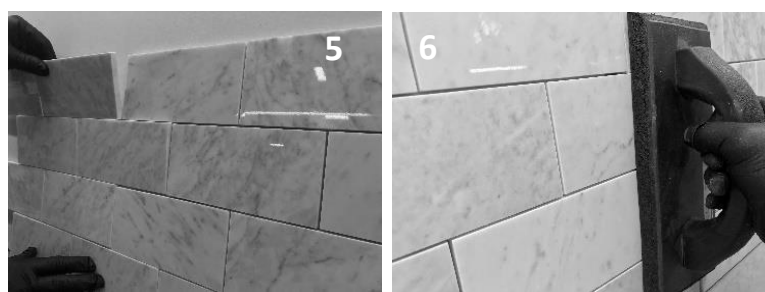
2. **Images 1-2.** If you need to cut a mosaic sheet, cut from the mesh from the back with a utility knife. As much as possible, make sure the mosaic tile sheets are cut between tiles. It is difficult to cut individual tiles. Use a wet saw with a diamond blade to cut through the tiles.



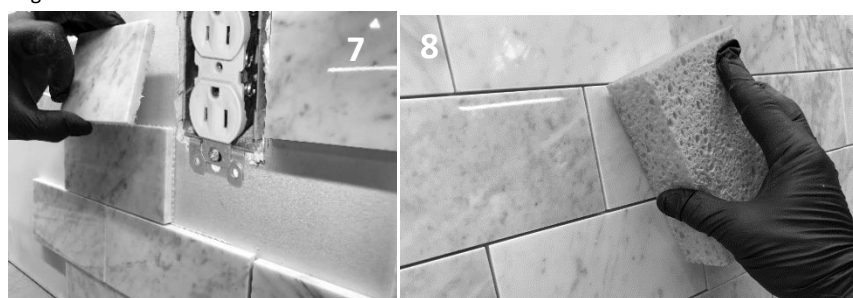
3. **Images 3-4.** Apply setting materials to the substrate using the notched side of a V-notched trowel. Using the flat side of the trowel, smooth out all ridges to achieve a consistent, even 3 mm (1/8 in) coverage.



4. **Images 5-6.** Apply marble mosaic sheets, mesh-side down, firmly into the freshly spread setting material. Mix and match from assorted sell units to achieve a consistent variation. Using a rubber float or equivalent tool, gently press the tile into the adhesive to ensure complete contact. Spacers can be used to maintain a set distance between mosaic tile sheets.



5. **Image 7.** To install mosaic tile around an obstacle such as a light fixture or an electrical socket, measure the height and width of the obstacle, as well as the distance of the obstacle from the last full sheet of tiles. Ensure that the power source to the outlet has been shut off. Mark the measurements on the back of the sheet of tile. Cut out the general shape of the obstacle using a utility knife. Cut through the mesh backing and around full pieces, keeping in mind that some sections will be bigger than the obstacle. Hold the sheet up to the wall to ensure that it fits, and adhere the mosaic tile to the wall using adhesive. Once all the tiles are in place, measure the gaps around the obstacle and use some of the leftover pieces to fill the gaps.



6. Once the mosaic tile installation is completed, it may be necessary to install an electrical box extender (found at your local hardware store) around electrical sockets or switches to allow the electrical plate to sit flush against the tile. **Ensure that the power supply to the outlet is turned off** when installing an electrical box extender, and follow the manufacturer's installation instructions or consult your local electrician.

7. Remove spacers once the adhesive has set, prior to grouting. Keep your tools and your workspace clean as you install the tiles. Wipe tiles with a sponge to remove any residual adhesive.

8. Natural stone should be sealed prior to grouting. A premium penetrating sealer is recommended for a natural look. Please refer to Sealer Manufacturer's recommendations for application instructions. Ensure that you only apply the sealer onto the stone.

9. **Image 8.** After 24 hours, mix non-sanded tile grout, and apply using a soft sponge. Let the grout set for a few minutes, following the manufacturer's instructions. Afterwards, even out grout by wiping the tile with a wet sponge in a circular motion. Clean residual grout using a clean sponge within 5 to 10 minutes of grout application.



10. **Image 9.** After 12 hours, polish off any remaining haze with a dry cloth or towel. Apply caulking between the mosaic wall tile and your countertop or other surface.

**MAINTENANCE AND CARE**

Marble tiles can be routinely cleaned with any non-abrasive cleaning compound or formula that is recommended for marble. **DO NOT** use acid-based products to clean your marble mosaic wall tile as this may affect its integrity. Follow manufacturer's instructions when using these products.

For assistance with assembly or installation, please contact our Technical Support Department by email at [techsupport@goldenselect.ca](mailto:techsupport@goldenselect.ca) or by telephone at 1-800-234-219. For parts and customer service, please email [info@goldenselect.ca](mailto:info@goldenselect.ca) or visit [www.goldenselect.ca](http://www.goldenselect.ca).