

**GOLDEN SELECT™ CLICK™
LUXURY VINYL PLANKS**

**ITM. / ART. # 111742
Model # 77LVT0838**

INSTALLATION INSTRUCTIONS

IMPORTANT, RETAIN FOR FUTURE REFERENCE: READ CAREFULLY

For assistance with assembly or installation, parts or customer service, please email info@goldenselect.ca or techsupport@goldenselect.ca, or visit www.goldenselect.ca. Service languages available: English, French, and Spanish.

This document provides the installation instructions for Golden Select™ Click™ Luxury Vinyl Planks (Click LVP). Click LVP is produced under the license of Flooring Industries™, the Unilin IP company.

Important note: The owner/purchaser must inspect for colour, finish and quality before installation. The manufacturer cannot be held responsible for costs incurred when flooring with visible colour defects has been installed.

TOOLS & MATERIALS

The following are not included. Please lay out all parts prior to installation. Read instructions prior to installation.

Knife
Tape measure
Pencil
Spacers
Square
Saw
Level
Mallet (recommended)
Chalk line or string (optional)
Crowbar (optional)
Seam roller (optional)

GENERAL GUIDELINES

All instructions and recommendations are based on the most recent information available. They should be followed for an ideal installation.

1. Click LVP should be installed in indoor climate-controlled locations between 18° - 27°C (65° - 80°F). **Click LVP should NEVER be installed in an outdoor/ exterior setting or in any type of garage.**
2. Click LVP should not be installed in unheated environments, such as cottages, camping trailers, or solariums.
3. Click LVP should be acclimated in the climate-controlled locations for 48 hours before starting installation.
4. Click LVP should only be installed after the job site has been cleaned and cleared of debris that could potentially damage a finished installation.
5. During the Click LVP installation, mix and install panels from several different cartons to minimize shade variation.
6. The finished Click LVP installation should be protected from exposure to continuous sunlight.
7. Click LVP cannot be installed with adhesives. The use of any sort of adhesive during the installation will void warranty.
8. Foam underlayment must not be applied under Click LVP.

SUBFLOOR INFORMATION

Although Click LVP is designed to be a “floating” floor installation, proper preparation of the subfloor is still a major part of a successful installation. Roughness or unevenness of the subfloor may show through the new floor, resulting in an unsightly surface, and cause excessive wear on high spots or indentation on low spots. All subfloor and underlayment patching must be done with a non-shrinking, water-resistant Portland cement patching compound.

A. Concrete Subfloors

1. Concrete subfloors must be dry, smooth and free from dust, solvent, grease, oil, asphalt sealing compounds and other extraneous materials. The surface must be hard and dense, and free from powder or flaking.
2. New concrete slabs must be thoroughly dry (at least six weeks) and completely cured. The final responsibility for determining if the concrete is dry enough for installation of the flooring lies with the floor covering installer.
3. Holes, grooves, expansion joints and other depressions must be filled with a latex-modified cementitious underlayment, and trowelled smooth and feathered even with the surrounding surface.
4. Concrete floors with a radiant heating system are satisfactory, provided the temperature of the floor does not exceed 29°C (85°F) at any point. Before installation, turn on the heating system to eliminate any residual moisture in the slab.

B. Wood Subfloors

1. Wood subfloors must be suspended at least 455 mm (18 in) above the ground. Adequate cross-ventilation must be provided, and the ground surface of a crawl space must be covered with a suitable vapour barrier.
2. Wood subfloors directly on concrete or installed over sleeper construction are NOT suitable for the installation.
3. Plywood composite panels can be used, provided they are smooth, flat, structurally sound and free of deflection. OSB, flake board, and particle boards are not recommended.
4. A 6 mm / 0.23 in CWC-registered plywood underlayment, sanded face, exterior-grade panel with minimum rating of C-C plugged face should be installed over the subfloor if the surface of the wood subfloor is not smooth.

C. Existing Floor Coverings

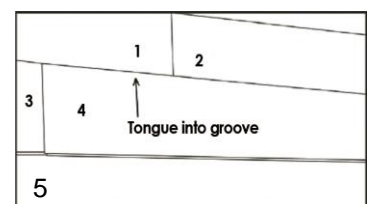
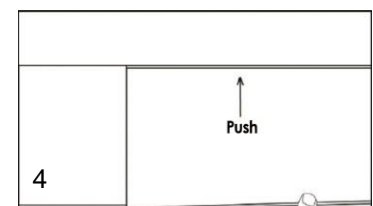
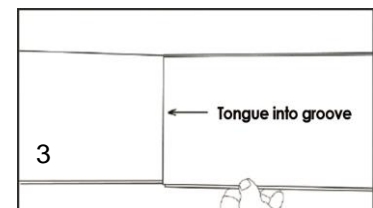
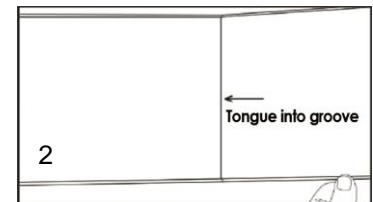
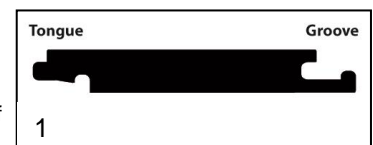
1. Click LVP can be installed over most existing hard-surface floor coverings, provided the existing floor surface is smooth, or can be made smooth.
2. Ceramic tile should be made smooth by applying a cementitious overlay such as patching or levelling compound manufactured specifically to smooth out ceramic grout joints.
3. For existing resilient floor, it may be required to apply a skim coat of embossing leveller over a deeply embossed floor. Heavily cushioned vinyl floor or vinyl floor consisting of multiple layers is NOT suitable subfloor for installation.

INSTALLATION

A. Plank Layout

Do not secure individual planks of Click LVP to the subfloor, as it is designed to be a floating floor. All doorjambes should be undercut and cabinets cannot be installed on top of Click LVP. Wall moldings and transition strips should be installed over any exposed plank edges but should not be fastened through the planks.

1. First, determine how you want the flooring to run. Typically for plank products, the flooring runs the length of the room. There may be exceptions since it is all a matter of preference.
2. To avoid narrow plank widths or short plank lengths near the walls/doors, it is important to do some pre-planning. Using the width of the room, calculate how many full boards will fit into the area and how much space remains that will need to be covered by partial planks. Divide the remaining space by two to calculate the width of the partial planks. Do the same along the length.
3. Note that if the first row of planks does not need to be trimmed in width, it will be necessary to cut off the unsupported tongue so that a clean, solid edge is toward the wall.
4. 8 mm (5/16 in) expansion gaps should be kept from the wall during the installation. This will allow space for the natural expansion and contraction of the planks.
5. The planks should be installed from left to right. From the top left corner of the room, put the first plank in place so that both the head and side seam grooves are exposed.
6. **Figure 1 and 2:** Install the second plank in the first row by angling the short side tongue into the short side groove of the first plank. Continue installing additional planks along the first row using the same angling method.
7. To start the second row, cut a plank that is half the length of the first plank in the first row (you may use the leftover plank from the last plank of the first row). This will create a popular staggered plank look. Then install this first plank by inserting the long side tongue into the groove of the plank in the first row.
8. **Figure 3:** Install the second plank in the second row by inserting the short side tongue into the previously installed first plank short side groove.
9. **Figure 4:** Align the plank so the long side tongue tip is positioned just over the groove lip of the plank in the first row.
10. **Figure 5:** Using gentle force and at a 20° - 30° angle, push the long side tongue into the groove of the adjoining plank by sliding along the short side seam. You may need to lift the plank to the left of it slightly to allow for the "sliding" action.
11. The remaining planks can be installed in the room using the same technique. Make sure the required expansion gaps are maintained against all fixed vertical parts (such as walls, doors, cabinets etc.).
12. The planks can be cut easily with a utility knife, just score the top of the plank and snap the plank in two.
13. When installing Click LVP in a bathroom, allow an expansion gap of 8 mm (5/16") around the perimeter of the room and around the perimeter of the toilet. These expansion gaps will allow the flooring to expand and contract without causing peaking in the flooring. Do not install the toilet on top of the newly installed floor. When leaving an expansion gap around the toilet, an area will be left that is exposed to the subfloor. To cover the exposed area, apply a silicone caulk around the toilet area, similar to the caulking around the bathtub area. The silicone caulk is flexible and will allow the flooring to expand and contract while preventing water from reaching the subfloor. Follow the manufacturer's installation instructions and safety procedures when applying the silicone caulk.



B. Repairs

In the unlikely event that a Click LVP is damaged for whatever reason, the simplest method is to disconnect the planks carefully (protecting the tongue and groove edges) until the damaged plank can be removed. Then replace the damaged plank with a new one and reassemble the disconnected planks. This typically works for planks that are close to the two long perimeters of a room. For damaged planks that are not close to the perimeter, you may have to remove the damaged planks and insert new pieces without one of the short and long end grooves.

1. Using a sharp utility knife and a straight edge, cut out the center of the damaged plank by leaving approximately 2.54 cm (1 in) strip attached to the adjacent planks.
2. Carefully cut back from the four corners of the plank to the inside edges in space left by the cut out plank.
3. Remove the plank edges carefully from the adjacent plank, making sure the tongues and grooves of the adjacent planks are not damaged.
4. Using a utility knife, remove the tongue strip on both the bottom long and left-side short ends of the replacement plank.
5. Place some doubled-sided carpet tape along the three sides of the adjacent planks where the tongues and the groove of the replacement plank have been removed. Only the top-side release paper of the carpet tape should be removed. The bottom-side release paper should NOT be taped on top of the subfloor.
6. Position the replacement plank by engaging the groove of the long side in the tongue of the adjoining plank at a slight angle while aligning the left-side end joint. Engage the left-side joint by pushing down along the edge. Use a hand roller to engage the remaining sides in the carpet tape. The carpet tape will hold the replacement plank in place with its adjacent planks.

WARRANTY

Golden Select™ affirms that the enclosed flooring is warranted for residential use to the original purchaser for a period of **20 years**. The stipulations of this warranty are as follows:

- The flooring will be free of manufacturing defects.
- The flooring surface will not wear through under normal household usage.

The following conditions apply to the warranty and may void the warranty if not respected:

- The flooring must be installed according to the instructions provided.
- If filing a warranty claim, it must be submitted within 30 days of the discovery of the damage.
- Any damage to the wear layer must be evident and visible, measuring at least 13 cm² (2 in²).
- Proof of purchase, such as a bill of sale, is mandatory when requesting warranty service.
- The manufacturer reserves the right to designate a representative to inspect the floor in question and remove samples for analysis.
- The warranty includes the replacement material, and excludes labor costs.

WARRANTY EXCLUSIONS

- Damage due to improper installation, care, cleaning, or maintenance.
- Use of any adhesive or solvent material during installation.
- Installation of Click LVP in an outdoor/exterior setting or in any type of garage.
- Installation of Click LVP in an unheated environment such as a cottage, camping trailer, or solarium.
- Damage caused by severe impact, scratching, cutting, fire, water damage, alterations, or any other wear or damage caused by acts of God.
- Damage caused by high heels, burns, cigarette burns, cuts, scratches, gouges, and indentations including damage from improper floor protectors and furniture rests; staining caused by dyes tracked from carpet, fertilizers, coal, tar, driveway sealers, oil drippings or other similar materials.
- Discoloration from mold or from flooding, leaking plumbing or appliances, water entering through sliding glass doors or similar conditions.
- Discoloration by exposure to direct sunlight.
- Discoloration caused by the use of area rugs or floor mats.

AUSTRALIA: Our goods come with guarantees that cannot be excluded under the Australian Consumer Law. You are entitled to a replacement or refund for a major failure and for compensation for any other reasonably foreseeable loss or damage. You are also entitled to have the goods repaired or replaced if the goods fail to be of acceptable quality and the failure does not amount to a major failure.

MADE IN CHINA