

# GOLDEN SELECT® RIGID CORE LUXURY VINYL PLANKS

This document provides the installation instructions for Golden Select® Rigid Core Luxury Vinyl Planks.

## IMPORTANT, RETAIN FOR FUTURE REFERENCE: READ CAREFULLY

**IMPORTANT NOTE:** The owner/purchaser must inspect the product for colour, finish, and quality before installation. The manufacturer cannot be held responsible for costs incurred when a floor with visible defects has been installed.

**IMPORTANT WARNING:** Your existing resilient flooring, backing, lining felt, asphalt cut-back adhesives, or other adhesives **MAY** contain asbestos fibers and/or crystalline silica. **DO NOT** grind, chip, sand, drill, saw, bead blast or pulverize this material in any way, either by hand or by machine. Avoid creating dust when working in contact with these materials. The inhalation of dust from these materials is a known cancer and respiratory tract hazard. Unless you are **absolutely certain** that the resilient flooring you are removing is a non-asbestos material, you must assume that it contains asbestos. Local regulations may require that the material be tested by an approved laboratory or agency for asbestos content and, if analyses confirm that the flooring contains asbestos, regulated removal and disposal of the material may be required.

For more information, refer to the current edition of the *Resilient Floor Covering Institute (RFCI) publication: "Recommended Work Practices for Removal of Resilient Floor Coverings"* ([www.rfci.com](http://www.rfci.com)).

### GENERAL GUIDELINES

All instructions and recommendations are based on the most recent information available. They should be followed for an ideal installation.

- Any type of additional underlayment must be removed prior to installing the product. No additional underlayment should be used underneath the product.
- Rigid core luxury vinyl planks should be installed in indoor climate-controlled locations between 18°C and 29°C (65°F and 85°F). **Rigid core luxury vinyl should NEVER be installed in an outdoor/interior setting or in any type of garage.**
- Rigid core luxury vinyl planks should be acclimated in climate-controlled locations for 48 hours before starting installation.
- Rigid core luxury vinyl planks should only be installed after the jobsite has been cleaned and cleared of debris that could potentially damage a finished installation.
- During the installation, mix and install panels from several different cartons to minimize shade variation.
- The finished installation should be protected from exposure to continuous sunlight. If the product is exposed to direct, continuous sunlight, this could cause buckling issues and breakage of the interlocking system, causing plank separation.
- Rigid core luxury vinyl planks cannot be installed with adhesives. The use of any sort of adhesive during the installation will void the warranty.
- Luxury vinyl flooring is installed as a floating floor. It is very important to never interfere with the movement of the vinyl (expansion and contraction). Never nail, screw, or glue the vinyl floor in a way that interferes with its movements.
- Rigid core luxury vinyl planks cannot be installed in an unheated environment such as a cottage, RV, or solarium.

### SUBFLOOR INFORMATION

Although rigid core luxury vinyl planks are designed to be a "floating" floor installation, proper preparation of the subfloor is still a major part of a successful installation. **DO NOT** install kitchen cabinets, islands, toilet stool, toilet vanity on top of the luxury vinyl planks. We recommend cutting the vinyl planks around the toilet stool before installing the stool. Leaving the required expansion gap and using a flexible caulking to hide the required expansion gap is necessary. Roughness or unevenness of the subfloor may show through the new floor, resulting in an unsightly surface and causing excessive wear on high spots or indentation on low spots. **All subfloors must be level and flat to 4.7 mm (3/16 in.) per 3.3 m (10 ft).** All subfloor and underlayment patching must be done with a non-shrinking, water-resistant Portland cement patching compound.

#### A. Concrete Subfloors

- Concrete subfloors must be dry, smooth, and free from dust, solvent, grease, oil, asphalt sealing compounds, and other extraneous materials. The surface must be hard and dense, and free from powder or flaking.
- New concrete slabs must be thoroughly dry (at least 60 days) and completely cured. The final responsibility for determining if the concrete is dry enough for installation of the flooring lies with the floor covering installer.
- Holes, grooves, expansion joints, and other depressions must be filled with a latex underlayment, troweled smooth, and feathered even with the surrounding surface.
- Concrete subfloors must have a minimum of 0.15 mm (6-mil) poly film between the concrete and the flooring.

#### B. Wood Subfloors

- Wood subfloors must be suspended at least 45.5 cm (18 in.) above the ground. Adequate cross-ventilation must be provided, and the ground surface of a crawl space must be covered with a suitable vapor barrier.
- Wood subfloors directly on concrete or installed over sleeper construction are NOT suitable for the installation.
- All wood and wood composition panels, including plywood, OSB, flake board, and particle boards, can be used provided they are smooth, flat, structurally sound and free of deflection.
- A 6 mm (1/4 in.) plywood should be installed over the subfloor if the surface of the wood subfloor is not smooth.
- Wood subfloors must be dry and well secured.

#### C. Existing Floor Coverings

- Rigid core luxury vinyl planks can be installed over most existing hard-surface floor coverings provided the existing floor surface is smooth or can be made smooth.
- Ceramic tiles should be made smooth by applying a cementitious overlay such as patching or leveling compound manufactured specifically to smooth out ceramic grout joints.
- For existing resilient floors, it may be required to apply a skim coat of embossing leveler over a deeply embossed floor. Heavily cushioned vinyl floors or vinyl flooring consisting of multiple layers are NOT suitable subfloors for installation.

#### D. Indoor Radiant Heat and Underfloor Heating

- Use only recommended flooring adhesive over manufacturer's recommended plywood substrate.
- Turn the heat off for 24 hours before, during, and 24 hours after installation when installing over radiant heated subfloors.
- Failure to turn the heat off may result in shortened working time of the adhesive.
- Floor temperature must not exceed 29°C (85°F).
- Can be installed over electric, water, and every other type of underfloor heating.
- Failure to strictly follow adhesive manufacturer's guidelines may result in failure and void warranty.

**WARNING: HEATING MATS ARE NOT RECOMMENDED FOR USE WITH RIGID CORE LUXURY VINYL FLOORING. IT IS BEST TO INSTALL THE RIGID CORE LUXURY VINYL FLOOR OVER EMBEDDED FLOOR HEATING SYSTEMS.**

Golden Select® rigid core luxury vinyl flooring has an IIC rating® of 69 and an STC rating of 61 (tested against ASTM E492 and ASTM E90 respectively). These test results are based on an installation with a 203 mm (8 in) concrete slab and a drop ceiling. If installing in a condo, it is recommended to verify if there are any sound rating requirements prior to installation.

### TOOLS AND SUPPLIES REQUIRED

Crosscut power saw, chalk line/string, pencil, tape measure, tapping block, rubber mallet, pull bar, painter's tape, safety glasses, carpenter's square, utility knife.

### INSTALLATION

#### PLANK LAYOUT

Do not secure individual rigid core luxury vinyl planks to the subfloor as they are designed to be a floating floor. All door jambs should be undercut, and cabinets cannot be installed on top of the rigid core luxury vinyl planks. Wall mouldings and transition strips should be installed over any exposed plank edges but should not be fastened through the planks.

- First, determine how you want the flooring to run. Typically for plank products, the flooring runs the length of the room. There may be exceptions since it is all a matter of preference.
- To avoid narrow plank widths or short plank lengths near the walls/doors, it is important to do some pre-planning. Using the width of the room, calculate how many full boards will fit into the area and how much space remains that will need to be covered by partial planks. Divide the remaining space by two to calculate the width of the partial planks. Do the same along the length.
- Note that if the first row of planks does not need to be trimmed in width, it will be necessary to cut off the unsupported tongue so that a clean, solid edge is toward the wall.
- 8 mm (5/16 in.) expansion gaps should be kept from the wall and all fixed objects (e.g. door jambs, mouldings, ceramic, marble, etc.) during the installation. This will allow space for the natural expansion and contraction of the planks.
- It is necessary to install a transition strip or T-moulding if the flooring is longer or wider than 12.19 m/40 ft or between rooms. T-moulding is also required in every doorway.
- The planks should be installed from left to right. From the top left corner of the room, put the first plank in place so that both the head and side seam grooves are exposed.
- Starting from the **left** with the tongue facing the wall, carefully place the first board in place (**Figure 1**).
- Place the short end tongue of the second plank into the groove of the first plank. Press down firmly to lock the short end, preferably by lightly tapping on the joint with a rubber mallet (**Figure 5**). Continue in this manner until reaching the final plank in the first row.
- Cut the final plank piece to length.
- Begin the second row with the cut piece from the first row (**Figure 2**). If the cut piece is shorter than 20 cm (8 in.), do not use it. Instead, begin with a new plank that is at least 20 cm in length and allows 20 cm between the end joints on the adjacent planks.
- Position the first plank of the second row by angling it up slightly on the long side, pushing forward, and interlocking the side tongue (**Figure 3**). Slide the plank to the left to align the edges of the end joint.
- Let the short side of the plank fold down until the tongue and groove lock together on the side and ends (**Figure 4**).
- Press down firmly on end joint, preferably tapping with a rubber mallet to fully engage the short end (**Figure 5**).
- Install the remaining planks and rows in the same manner (**Figures 3, 4 & 5**).
- Cut the last plank to size. If necessary, complete the tight fit by tapping the plank into place with a pull bar.
- Whenever practical, use cut pieces from previous rows as the starter plank to reduce waste.
- For the best look, maintain 20 cm spacing between end joints after the first four rows.
- The last row may need to be cut lengthwise.
- Place the last row of planks to be fit on the top of the last row of installed planks. Use a piece of plank as a guide to trace the contour of the wall.
- Mark where the plank will be cut. If the fit of the wall is simple and straight, measure for the correct fit and cut.
- After planks are cut, position the planks, and tighten the fit using the pull bar.

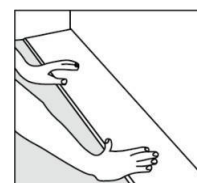


Figure 1

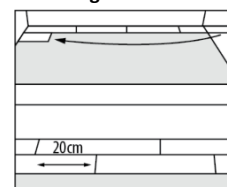


Figure 2

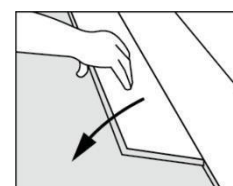


Figure 3

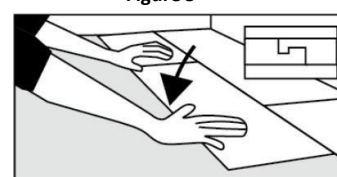


Figure 4

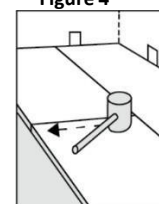


Figure 5

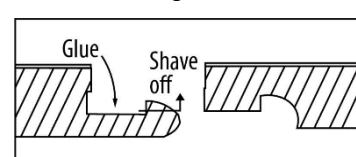


Figure 6

#### INSTALLING UNDER A DOOR JAMB:

- Installation under mouldings (such as door jambs) may require that the top lip of the groove on the end be reduced in size.
- Using a small plane or utility knife, carefully shave off the ledge of the groove (**Figure 6**).

- After the groove ledge has been trimmed, put the board in place and tighten with a pull bar to test for a tight fit. The installer must be sure that the required expansion gap has been maintained and the flooring is not pinched.
- If the fit is incorrect, re-trim until the fit is correct.
- Place a bead of glue on the bottom lip of the groove.
- Insert the tongue into the groove and tighten the fit with a pull bar. Hold the plank in place with painter's tape until the glue is dry. Do not use masking tape or duct tape as they may damage the floor's finish.

### Recommendation for Wet Area Installation:

When installing in moisture prone areas (e.g. kitchens, bathrooms, entryways), seal all expansion spaces with a compressible PE foambacker rod and 100% neutral cure flexible silicone caulk as described in the following procedure.

NOTE: Care should be taken to address any moisture-related issues prior to installing rigid core luxury vinyl.

NOTE: Do not use acrylic-based caulks. Do not use acetoxysilicone caulks.

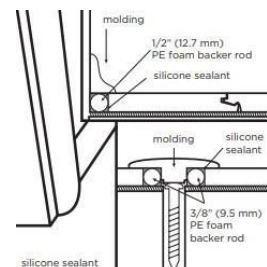


Figure 7

### PROCEDURE:

- Insert a 12 mm (1/2 in.) compressible PE foam backer rod into room perimeter expansion space and cover completely with flexible silicone caulk.
- Insert a 10 mm (3/8 in.) compressible PE foam backer rod at transitions and cover completely with flexible silicone caulk.
- Use 100% flexible neutral cure silicone caulking around door frames and other fixed objects (e.g. plumbing).
- Install baseboards, quarter-rounds, or other applicable mouldings and immediately wipe up excess caulk.
- Ensure baseboards or quarter-rounds are attached to walls, not floors.

### AFTER INSTALLATION

- Flooring should be one of the last items installed in a project. In order to protect the floors while other projects are being completed, use rosin paper and painter's tape to hold the rosin paper to the floor (other tapes may damage the finish). Clean the floor thoroughly before laying the rosin paper to ensure that no debris is trapped underneath. DO NOT USE plastic film or other non-breathing coverings as this can cause the floor to become damaged from excess humidity.
- Dust mop or vacuum your floor to remove any dirt or debris.
- It is suggested that you buff the floor with lamb-wool pads in order to remove any loose splinters, residues, footprints, etc.
- Install any transition pieces that may be needed (reducers, T-mouldings, nosing, etc.).

### PROTECTION AND MAINTENANCE

Lasting beauty can be achieved through purchasing a quality floor covering and on-going maintenance.

- Furniture should be moved onto the newly installed floor using an appliance hand truck over hardboard runways.
- Avoid extended exposure to direct sunlight. It is recommended to close the blinds or drapes during peak sunlight hours. Floor coverings exposed to excessive heat and light are subject to thermal degradation. Use the appropriate precautions to minimize potential effects on the floor covering.
- Oil or petroleum-based products can result in surface staining. Do not track asphalt-driveway sealer or automobile-oil drips onto the rigid core luxury vinyl floor covering.
- Frequently moved furniture should be equipped with felt pads to avoid scratching the floor. Heavy furniture and appliances should be equipped with non-staining large surface floor protectors. Furniture with castors or wheels must be easy swiveling, large-surface, non-staining, and suitable for resilient floors. Do NOT use ball type castors as they can damage the floor.
- Use walk-off mats at entrances to prevent dirt and grit from being tracked on to the floor.
- Sweep or vacuum the floor regularly to remove loose dirt. Do NOT use vacuums that use a beater bar or turn beater bar off.
- Do NOT use electric brooms with hard plastic bottoms with no padding.
- Clean up spills immediately.
- Damp mop as needed using clean water and a diluted floor cleaner. Do NOT use harsh cleansers, chemicals, abrasive scrubbing tools, detergents, abrasive cleaners, or "mop and shine" products.
- Rigid core luxury vinyl flooring, like other types of smooth floors, may become slippery when wet. Allow time for the floor to dry after washing. Immediately wipe up wet areas from spills, foreign substances, or wet feet.

### REPAIRS

In the unlikely event that a rigid core luxury vinyl plank is damaged for whatever reason, the simplest method is to disconnect the planks carefully (protecting the tongue and groove edges) until the damaged plank can be removed. Then replace the damaged plank with a new one and reassemble the disconnected planks. This typically works for planks that are close to the two long perimeters of a room.

For damaged planks that are not close to the perimeter, you may have to remove the damaged planks and insert new pieces without the short and long end grooves.

- Using a sharp utility knife and a straight edge, cut out the center of the damaged plank by leaving approximately 2.5 cm (1 in.) strip attached to the adjacent planks.
- Carefully cut back from the four corners of the plank to the inside edges in space left by the cut-out plank.
- Remove the plank edges carefully from the adjacent planks making sure the tongues and grooves of the adjacent planks are not damaged.
- Using a utility knife, remove the tongue strip on both the long and short ends of the replacement plank. In addition, remove the groove strip of the short end of the replacement plank.
- Place some double-sided carpet tape along the three sides of the adjacent planks where the tongues and the groove of the replacement plank have been removed. Only the top side release paper of the carpet tape should be removed. The bottom side release paper should NOT be taped on top of the subfloor.
- Position the replacement plank by engaging the groove of the long side into the tongue of the adjoining plank and pushing down on the other three sides. The carpet tape will hold the replacement plank in place with its adjacent planks. Use a hand roller to further secure the tape.

### WARRANTY

Golden Select® certifies to the original purchaser that rigid core luxury vinyl planks are covered by a **limited warranty of 35 years for residential use and a limited warranty of 15 years for commercial use.**

Golden Select® warrants that:

- The flooring will be free of manufacturing defects.** You and/or your installer should carefully inspect each piece before installation. Any pieces that appear to have defects should not be installed. Golden Select® will not be responsible for any claim for flooring installed with visual defects.
- Residential use warranty of 35 years:** Golden Select® warrants that the finish will not wear through from the date of purchase under normal household foot traffic.
- Commercial use warranty of 15 years:** Golden Select® warrants that the finish will not wear through from the date of purchase under normal foot traffic in an approved commercial setting.

The following conditions apply to the warranty and may void the warranty if not followed correctly:

- The flooring must be installed according to the instructions provided.
- If filing a warranty claim, it must be submitted within 30 days of the discovery of the damage.
- The wear on the protective layer must be evident and visible, measuring at least 13 cm<sup>2</sup> (2 square inches). Wear must be through the protective layer to the degree that the printed pattern is affected or altered.
- The warranty is non-transferable and applies only to the original purchaser.
- Proof of purchase, such as a bill of sale, is mandatory when requesting warranty service.
- The manufacturer reserves the right to designate a representative to inspect the floor in question and remove samples for analysis.
- The warranty includes the replacement material and excludes labor costs.

### WARRANTY EXCLUSIONS

- Damage due to improper installation, care, cleaning, or maintenance.**
- Use of additional underlay in the installation of the flooring.
- Use of any adhesive or solvent material during installation.
- Installation of rigid core luxury vinyl in an outdoor/ exterior setting or in any type of garage.**
- Scratches, dents (gouges), scuff marks, water damage, breakage of the locking system or core, chipped corners or edges, buckling issues, planks separation caused by lack of expansion and contraction, unevenness of subfloors or underlayment used, and peeling of the décor paper caused by breakage of the core.
- Scratching or clawing or any similar damage caused by pets.
- The use of rigid core luxury vinyl planks in an unheated environment such as a cottage, RV, or solarium.
- The flooring dulled by soaps, detergents, harsh chemicals, dressings, one-step cleaners, or wax.
- Damage caused by high heels, burns, cigarette burns, cuts, scratches, gouges, and indentations including damage from improper floor protectors and furniture rests; staining caused by dyes tracked from carpet, fertilizers, coal, tar, driveway sealers, oil drippings or other similar materials.
- Problems due to moisture and/or alkalinity of the subfloor.
- Flooring installed over unstable subfloors (particleboard, chip wood, or pressboard), improperly prepared subfloors, or wet/cold floors are not covered by the limited warranty.
- Discolouration from mold or from flooding, leaking plumbing or appliances, water entering through sliding glass doors, or similar conditions.
- Discolouration from exposure to direct sunlight or heat generation.
- Discolouration caused by the use of area rugs or floor mats. Use non-staining mats, for rubber mats will discolor the floor.
- The warranty will be voided if any cabinet, island, toilet, or vanity are installed on top of the rigid core luxury vinyl flooring.
- The warranty will be voided if the floor has been partially or completely removed without (Golden Select®) authorization.

For assistance with assembly or installation, please contact our Technical Support Department by email at [techsupport@goldenselect.ca](mailto:techsupport@goldenselect.ca) or by telephone at 1-800-267-3183. For customer service, please contact our customer service department at [info@goldenselect.ca](mailto:info@goldenselect.ca). For questions regarding the warranty, please contact our Customer Service Department by email at [warranty@goldenselect.ca](mailto:warranty@goldenselect.ca). Visit our website at [www.goldenselect.ca](http://www.goldenselect.ca).